



M³ Module: Traffic Density Map

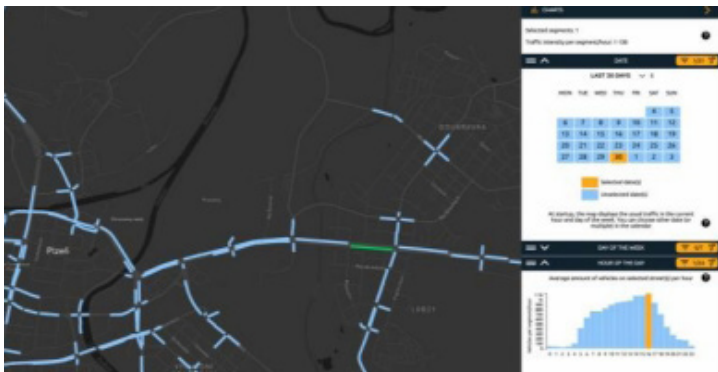
Traffic delays caused by congestion and road accidents are time consuming, frustrating and expensive to solve.

Discover new ways to retrieve data-driven insights for **smarter strategic and operational traffic management decision making**.

Decisions are based more on accurate information rather than just assumptions.

The traffic density map helps to check upon the current traffic density detected by the ANPR cameras on road segments. Use the powerful integrated data-processing engine behind the map to visualize historical traffic on any segment at any time of the day, during a given time period of your choice. Filter historical traffic data for specific days and hours by clicking on the calendar and on charts.

The availability of this module obviously depends on the quality level of the available data. Please contact us for further information.



Key Features

- View real-time or historic traffic intensity and speed data on a **dynamic interactive map**
- **Explore charts displaying data** from the maps to analyze the whole map or selected road segments
- **Analyze patterns in traffic data** to understand conditions on specific date ranges, days and hours
- **Make smarter decisions** based on historic and real-time insights
- **Online viewing portal**
- View on **past data and forecasted data**



Ready to use with our

**MACQ MOBILITY
MANAGER**