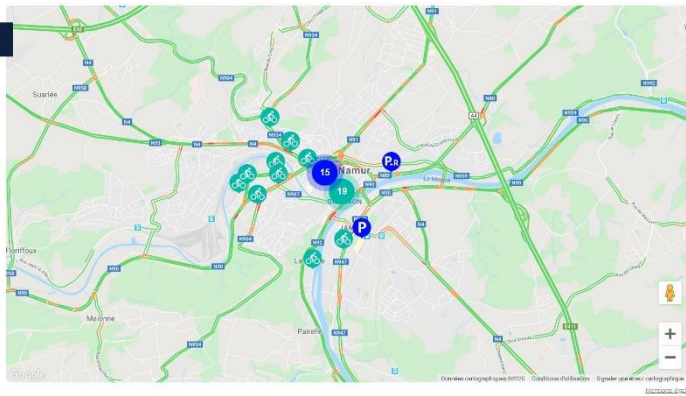




## M<sup>3</sup> MODULE: MOBILITY PORTAL

This man machine interface was developed and designed to meet your demanding smart city requirements and will store **all real-time data** from various equipment and systems **to provide support to the city traffic managers.**

The goal of our Mobility Portal solution is to centralize all mobility-related information of a city onto one server, to process all data and to present valuable and time-saving information to citizens via a visual and an easy to use well designed graphical user interface.



### KEY FEATURES

- ▶ **Bike & car sharing information** (stations, available vehicles, number of bikes available at each stand, etc.)
- ▶ **Available parking spots**, number of free spaces in each carpark or park & ride
- ▶ **Traffic density flow & travel time information, real-time road congestion information**
- ▶ **Public transport information** including taxis, e.g. bus time arrivals and departures in real-time, real-time localization, etc.
- ▶ Secure **bike itineraries** through the city
- ▶ **Air quality & noise levels**
- ▶ **Variable message signs**
- ▶ **Road works** around the city
- ▶ **Closed roads**

✓ Ready to use with



### CONTACT US

+32 2 610 15 00  
contact@macq.eu